

Child Care Resource & Referral

■ WILL ■ GRUNDY ■ KENDALL ■ KANKAKEE COUNTIES



ANNUAL REPORT FY 2008

Serving Will, Grundy, Kendall, and Kankakee Counties



CHILD CARE RESOURCE & REFERRAL ANNUAL REPORT -- FY 2008

Mission:

To promote and facilitate the availability of affordable quality child care through assistance, education and advocacy in Will, Grundy, Kendall, and Kankakee counties.

WILL, GRUNDY, KENDALL & KANKAKEE COUNTIES DEMOGRAPHICS

Total population:	698,178
Children under age 5:	56,153
Children ages 5-9:	59,654
Children ages 10-14:	56,735

Background:

Child Care Resource & Referral (CCR&R) agencies in Illinois were originally founded to help educate parents about appropriate child care and to help providers improve and expand their child care services. In 1997, CCR&R's were contracted by Illinois Department of Human Services (IDHS) to also administer monies to families that qualified to receive financial assistance for child care expenses.

Through a network of community-based agencies that serve 16 service delivery areas (SDA's), every county in Illinois is served by a CCR&R agency. Individual agency efforts are coordinated and supported through the Illinois Network of Child Care Resource & Referral Agencies (INCCRRA), which is funded in part by IDHS.

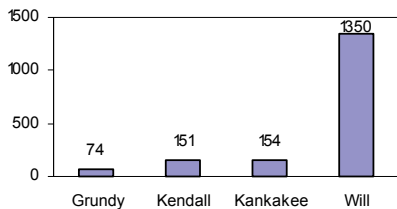
Locally, CCR&R serves parents, child care providers, employers, and communities in 4 northeastern Illinois counties: Will, Grundy, Kendall, and Kankakee.

PARENT SERVICES

Referral Service:

CCR&R assists families in their search for child care by discussing child care options, giving referrals to local child care providers, providing information on state licensing requirements, and other information pertinent to their family's needs. CCR&R has a comprehensive database of child care providers, so families can be referred to child care arrangements that meet their needs.

In FY08 1,849 parents called seeking care for 2,874 children. Calls by county are shown at right.



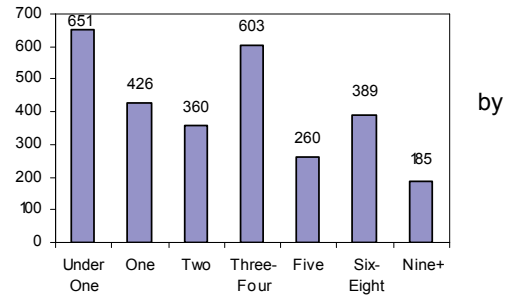
FY08 statistics

show that of the 1,849 families who called seeking child care referrals, 61% were single parent families and 96% of callers were over 20 years of age. 80% of callers were making incomes at 60% or lower than the state median income.

Parents can request more than one type of care from our database. Most parents considered both family child care homes and centers as they began their child care search. They could also choose licensed or licensed-exempt homes or centers. Licensed facilities have met DCFS requirements for their particular type of business-either family child care home or center. Licensed-exempt facilities do not need a license if they are a home and are caring for 3 or fewer children including their own, or children from just one other family.

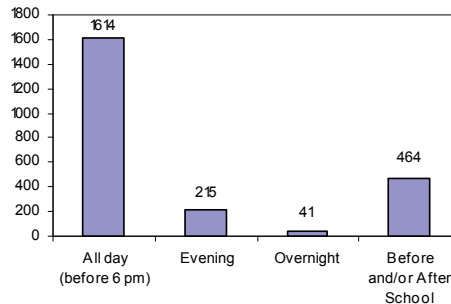
Center programs are exempt from licensing if they are operated in public schools, operated by a church, civic program, or government organization, or provide temporary care while parents are on the premises.

Care was most requested in FY08 for infants (22%), followed 3 & 4's (21%), and school-agers (20%), as the chart at right indicates.



Almost three-fourths of parents calling CCR&R were seeking full-week care. 6% needed care at least one day on the weekend.

As the chart at left shows, the hours for care most frequently requested were daytime hours, followed by before/after school care.



Child Care Assistance Program:

CCR&R believes that all children deserve access to quality care, regardless of their family's income level. By administering the IDHS Child Care Assistance Program, eligible low-income families have increased options for their child care needs.

In FY08, there were 3,490 active child care cases with 7,028 children being in child care while their parent(s) were working or attending an approved education/training program. 98 of the cases are families receiving cash assistance from IDHS. Approximately 24 million dollars annually passes through Child Care Resource & Referral as payments to child care providers. The most frequent type of care chosen by families receiving child care assistance was a licensed-exempt home, followed by licensed homes and licensed centers.

The below income guidelines will be indexed annually so that the thresholds are no less than 185% of the federal poverty level for each family size. To receive assistance a family's income must not exceed the following guidelines:

Family Size	Monthly Income
2	\$2,334
3	\$2,934
4	\$3,534
5	\$4,134
6	\$4,734
7	\$5,334
8	\$5,934

**SNAPSHOTS ---THE CHILD CARE PICTURE
IN WILL COUNTY, IL FY 2008**

Prepared by Child Care Resource & Referral

DEMOGRAPHIC INFORMATION*:

Total Population	502,266
Children Ages 0-5	42,028
Children Ages 6-12	60,809
	102,837
Median annual family income	\$69,383
Median weekly family income (annual /52)	\$1,334

**From 2000 United States Census*



CHILD CARE PROGRAMS (Programs/spaces)

	Licensed	License-Exempt	Total
Family Child Care	477/3,949	10/28	487/3,977
Child Care Center	121/9,091	115/7,913	236/17,004
Total:	598/13,040	125/7,941	723/20,981**

**** From 2008 CCR&R database**

20,981 spaces for 42,028 children ages 0-5 and 60,809 school-age children shows a severe shortfall of available spaces.

AVERAGE WEEKLY CHILD CARE TUITION INFORMATION

Tuition Rates	Infant	Toddler	2's	3-4's	5's to K	School-Age Before/After	School-Age Summer
Family Child Care	\$158	\$151	\$147	\$143	\$139	\$101	\$137
Child Care Center	\$225	\$209	\$187	\$171	\$163	\$113	\$166
Weighted Average	\$191.50	\$180	\$167	\$157	\$151	\$107	\$151.50

Families making the median family income pay 10% to 15% of their income before taxes for child care.

Without the Illinois Child Care Assistance Program, single working parents in **WILL COUNTY**, working full-time, making minimum wage (\$6.50/hour X 40 hours = \$260 per week before taxes) and with an infant in child care would pay:

- 87% of their income before taxes, if their child was in a child care center.
- 61% of their income before taxes, if their child was in a child care home.

In 2008, Child Care Resource & Referral helped over 1,350 families in Will County find and choose quality child care, administered state financial assistance to over 2,280 qualified families in need, provided professional education and support to nearly 1,470 educators and caregivers, worked with over 400 individuals interested in entering the child care profession, and provided more than 300 social emotional consultations.

All of these services help to make our communities more supportive of families and children.

PRESCHOOL FOR ALL

At CCR&R, child care providers can participate in the “Preschool for All” initiative through a grant from **The Illinois State Board of Education (ISBE)**. For these providers who are in CCR&R’s Child Care Network,



training is available in the “Illinois Early Learning Standards,” the “Environmental Rating Scale System,” the “Creative Curriculum and Language Literacy Programs.” “Preschool for All” is a high quality Early Childhood education program for children 3 and 4 years old and is geared to help children prepare for kindergarten. There is no cost for the program and it is offered in half day sessions (2.5 hours a day.) In Will County, there is one Child Care Center and fourteen Family Child Care homes that participate in the program.

FAMILY, FRIEND AND NEIGHBOR

Through a grant from the **United Way of Will County**, the Child Care Assistance Department at CCR&R was able to implement a program known as the “Family, Friend and Neighbor Program” to assist the home-based provider population in providing quality childcare for low-income children in Will County. This continuing program consists of an informal visit to the provider’s home to give them information on quality childcare and services available to the provider through CCR&R. Also, during this visit, CCR&R staff offer information on developmentally appropriate practices through reading a book to the children, followed by a hands-on activity and song related to the book. Basic information on health and safety is also provided that focuses on hand washing as the best prevention of most common childhood illnesses. Providers are left with a tote bag containing 2 children’s books and activities, liquid soap, personal first aid kit, smoke detector, fire alarm, growth charts, coloring books, crayons, outlet covers, boo bears, and bubbles, as well as the brochures and flyers on health, safety, and child development. Through a grant from **Will County Community Foundation**, the Training Department at CCR&R expanded the Family, Friend and Neighbor Program by offering a Child Care Training Program. The Family, Friend and Neighbor providers bring the children to CCR&R for interactive trainings planned around the research based program “Creative Curriculum.” These “hands-on” training sessions include all areas of a child’s development: language, cognitive, physical, creative, and social emotional development. The providers are given materials so that they may duplicate the activities in the home setting and family articles are given to the providers to distribute to parents.



QUALITY RATING SYSTEM (QRS)

The Quality Counts: Quality Rating System (QRS) assists Illinois child care programs in providing quality care for children and their families. This initiative is funded by the **Illinois Department of Human Services (IDHS)**. This voluntary system is available to license-exempt family child care providers, licensed family child care providers, and licensed centers. License-exempt centers need to become licensed to participate in QRS. Providers must serve children eligible for the IDHS Child Care Assistance Program (CCAP) in order to participate in QRS. The system offers progressive levels which providers can achieve depending on the type of care they provide. Specific quality criteria must be met to achieve a level. Once a child care provider has met the required criteria for a level, they will be recognized for their achievement and receive a quality add-on rate to the CCAP standard daily reimbursement rate. Technical assistance, training, and support are offered to all types of providers through Child Care Resource & Referral.

SNAPSHOTS ---THE CHILD CARE PICTURE IN GRUNDY COUNTY, IL FY 2008 Prepared by Child Care Resource & Referral

DEMOGRAPHIC INFORMATION*:

Total Population	37,535
Children Ages 0-5	2,493
Children Ages 6-12	<u>5,679</u> 8,172
Median annual family income	\$60,862
Median weekly family income (annual /52)	\$1,170

**From 2000 United States Census*



CHILD CARE PROGRAMS (Programs/spaces)

	Licensed	License-Exempt	Total
Family Child Care	18/155	0/0	18/155
Child Care Center	11/632	7/345	18/977
Total:	29/787	7/345	36/1132**

***From 2008 CCR&R database*

1132 spaces for 2,493 children ages 0-5 and 5,679 school-age children shows a severe shortfall of available spaces.

AVERAGE WEEKLY CHILD CARE TUITION INFORMATION

Tuition Rates	Infant	Toddler	2's	3-4's	5's to K	School-Age Before/After	School-Age Summer
Family Child Care	\$140	\$137	\$136	\$131	\$128	\$52	\$116
Child Care Center	\$165	\$160	\$136	\$130	\$128	\$72	\$126
Weighted Average	\$152.50	\$148.50	\$136	\$130.50	\$128	\$62	\$121

Families making the median family income pay 10% to 15% of their income before taxes for child care.

Without the Illinois Child Care Assistance Program, single working parents in **GRUNDY COUNTY**, working full-time, making minimum wage (\$6.50/hour X 40 hours = \$260 per week before taxes) and with an infant in child care would pay:

- 63% of their income before taxes, if their child was in a child care center.
- 54% of their income before taxes, if their child was in a child care home.

In 2008, Child Care Resource & Referral helped over 70 families in Grundy County find and choose quality child care, administered state financial assistance to over 1,250 qualified families in need, provided professional education and support to nearly 200 educators and caregivers, worked with over 80 individuals interested in entering the child care profession, and provided more than 95 social emotional consultations.

All of these services help to make our communities more supportive of families and children.

FAMILY, FRIEND AND NEIGHBOR

Through a grant from **United Way of Grundy County**, the child care assistance department at CCR&R was able to implement a program known as the “Family, Friend and Neighbor Program” to assist the home-based provider population in providing quality childcare for low-income children in Grundy County. This continuing program consists of an informal visit to the provider’s home to give them information on quality childcare and services available to the provider through CCR&R. Also, during this visit, CCR&R staff offer information on developmentally appropriate practices by reading a book to the children, followed by a hands-on activity and song related to the book. Basic information on health and safety is also provided that focuses on hand washing as the best prevention of most common childhood illnesses. Providers are left with a tote bag containing 2 children’s books and activities, liquid soap, personal first aid kit, smoke detector, fire alarm, growth charts, coloring books, crayons, outlet covers, boo bears, and bubbles, as well as the brochures and flyers on health, safety, and child development.



QUALITY RATING SYSTEM (QRS)

The Quality Counts: Quality Rating System (QRS) assists Illinois child care programs in providing quality care for children and their families. This initiative is funded by the **Illinois Department of Human Services (IDHS)**. This voluntary system is available to license-exempt family child care providers, licensed family child care providers, and licensed centers. License-exempt centers need to become licensed to participate in QRS. Providers must serve children eligible for the IDHS Child Care Assistance Program (CCAP) in order to participate in QRS. The system offers progressive levels which providers can achieve depending on the type of care they provide. Specific quality criteria must be met to achieve a level. Once a child care provider has met the required criteria for a level, they will be recognized for their achievement and receive a quality add-on rate to the CCAP standard daily reimbursement rate. Technical assistance, training, and support are offered to all types of providers through Child Care Resource & Referral.

Social Emotional Learning Facilitation (S.E.L.F.) Program Adds Caregiver Connections

CCR&R designed the Social Emotional Learning Facilitation Program (SELF) to meet the needs of children with challenging behaviors in child care centers and family child care homes. SELF Program has now added Caregiver Connections. Funded by the **Illinois Department of Human Services (IDHS)** and coordinated by **Chaddock Child and Family Center**, Caregiver Connections offers a wide range of services and supports at no cost to those caring for and educating children, including: consultation with caring, experienced professionals, new ideas that can help children develop appropriate social and emotional skills, support and training that equips providers to deal confidently with difficult situations when working with staff and families, connections to screening resources that can identify developmental problems early, and referrals to evaluation and family services.



**SNAPSHOTS ---THE CHILD CARE PICTURE
IN KENDALL COUNTY, IL FY 2008
Prepared by Child Care Resource & Referral**

DEMOGRAPHIC INFORMATION*:

Total Population	54,544
Children Ages 0-5	4,362
Children Ages 6-12	<u>6,415</u>
	10,777
Median annual family income	\$64,625
Median weekly family income (annual /52)	\$1,243

**From 2000 United States Census*



CHILD CARE PROGRAMS (Programs/spaces)

	Licensed	License-Exempt	Total
Family Child Care	81/633	1/1	82/634
Child Care Center	34/2,384	18/1,143	52/3,527
Total:	115/3,017	19/1,144	134/4,161**

**** From 2008 CCR&R database**

4,161 spaces for 4,362 children ages 0-5 and 6,415 school-age children shows a severe shortfall of available spaces.

AVERAGE WEEKLY CHILD CARE TUITION INFORMATION

Tuition Rates	Infant	Toddler	2's	3-4's	5's to K	School-Age Before/After	School-Age Summer
Family Child Care	\$173	\$168	\$162	\$159	\$155	\$102	\$150
Child Care Center	\$250	\$227	\$206	\$185	\$179	\$114	\$180
Weighted Average	\$211.50	\$197.50	\$184	\$172	\$167	\$108	\$165

Families making the median family income pay 10% to 15% of their income before taxes for child care.

Without the Illinois Child Care Assistance Program, single working parents in **KENDALL COUNTY**, working full-time, making minimum wage (\$6.50/hour X 40 hours = \$260 per week before taxes) and with an infant in child care would pay:

- 96% of their income before taxes, if their child was in a child care center.
- 67% of their income before taxes, if their child was in a child care home.

In 2008, Child Care Resource & Referral helped over 160 families in Kendall County find and choose quality child care, administered state financial assistance to over 195 qualified families in need, provided professional education and support to nearly 100 educators and caregivers, worked with over 80 individuals interested in entering the child care profession, and provided more than 10 social emotional consultations.

All of these services help to make our communities more supportive of families and children.

QUALITY RATING SYSTEM (QRS)

The Quality Counts: Quality Rating System (QRS) assists Illinois child care programs in providing quality care for children and their families. This initiative is funded by the **Illinois Department of Human Services (IDHS)**. This voluntary system is available to license-exempt family child care providers, licensed family child care providers, and licensed centers. License-exempt centers need to become licensed to participate in QRS. Providers must serve children eligible for the IDHS Child Care Assistance Program (CCAP) in order to participate in QRS. The system offers progressive levels which providers can achieve depending on the type of care they provide. Specific quality criteria must be met to achieve a level. Once a child care provider has met the required criteria for a level, they will be recognized for their achievement and receive a quality add-on rate to the CCAP standard daily reimbursement rate. Technical assistance, training, and support are offered to all types of providers through Child Care Resource & Referral.



licensed family child care providers, and licensed centers. License-exempt centers need to become licensed to participate in QRS. Providers must serve children eligible for the IDHS Child Care Assistance Program (CCAP) in order to participate in QRS. The system offers progressive levels which providers can achieve depending on the type of care they provide. Specific quality criteria must be met to achieve a level. Once a child care provider has met the required criteria for a level, they will be recognized for their achievement and receive a quality add-on rate to the CCAP standard daily reimbursement rate. Technical assistance, training, and support are offered to all types of providers through Child Care Resource & Referral.

Social Emotional Learning Facilitation (S.E.L.F.) Program Adds Caregiver Connections

CCR&R designed the Social Emotional Learning Facilitation Program (SELF) to meet the needs of children with challenging behaviors in child care centers and family child care homes. SELF Program has now added Caregiver Connections. Funded by the **Illinois Department of Human Services (IDHS)** and coordinated by **Chaddock Child and Family Center**, Caregiver Connections offers a wide range of services and supports at no cost to those caring for and educating children, including: consultation with caring, experienced professionals, new ideas that can help children develop appropriate social and emotional skills, support and training that equips providers to deal confidently with difficult situations when working with staff and families, connections to screening resources that can identify developmental problems early, and referrals to evaluation and family services.

LOOKING TO THE FUTURE

As stated in last year's Annual Report, a group of individuals representing a variety of entities, have been brainstorming ideas to increase outreach to this community and focus on the unmet needs. CCR&R has applied to be a partner agency of the Fox Valley United Way and looks forward to participating in its *Success by 6* venture. There are many ideas being implemented for next year and more information will be included in next year's report.



**SNAPSHOTS ---THE CHILD CARE PICTURE
IN KANKAKEE COUNTY, IL FY 2008
Prepared by Child Care Resource & Referral**

DEMOGRAPHIC INFORMATION*:

Total Population	103,833
Children Ages 0-5	7,270
Children Ages 6-12	<u>11,506</u>
	18,776
Median annual family income	\$48,975
Median weekly family income (annual /52)	\$942

**From 2000 United States Census*



CHILD CARE PROGRAMS (Programs/spaces)

	Licensed	License-Exempt	Total
Family Child Care	123/1,055	1/3	124/1,058
Child Care Center	26/1,559	22/1,615	48/3,174
Total:	149/2,614	23/1,618	172/4,232**

**** From 2008 CCR&R database**

4,232 spaces for 7,270 children ages 0-5 and 11,506 school-age children shows a severe shortfall of available spaces.

AVERAGE WEEKLY CHILD CARE TUITION INFORMATION

Tuition Rates	Infant	Toddler	2's	3-4's	5's to K	School-Age Before/After	School-Age Summer
Family Child Care	\$106	\$104	\$102	\$101	\$100	\$80	\$100
Child Care Center	\$183	\$176	\$143	\$126	\$122	\$93	\$118
Weighted Average	\$144.50	\$140	\$122.50	\$113.50	\$111	\$86.50	\$109

Families making the median family income pay 10% to 15% of their income before taxes for child care.

Without the Illinois Child Care Assistance Program, single working parents in **KANKAKEE COUNTY**, working full-time, making minimum wage (\$6.50/hour X 40 hours = \$260 per week before taxes) and with an infant in child care would pay:

- 70% of their income before taxes, if their child was in a child care center.
- 41% of their income before taxes, if their child was in a child care home.

In 2008, Child Care Resource & Referral helped over 150 families in Kankakee County find and choose quality child care, administered state financial assistance to over 870 qualified families in need, provided professional education and support to nearly 480 educators and caregivers, worked with over 1,550 individuals interested in entering the child care profession, and provided more than 15 social emotional consultations.

All of these services help to make our communities more supportive of families and children.

PRESCHOOL FOR ALL

At CCR&R, child care providers can participate in the “Preschool for All” initiative through a grant from **The Illinois State Board of Education (ISBE)**. For these providers who are in CCR&R’s Child Care Network, training is available in the “Illinois Early Learning Standards,” the “Environmental Rating Scale System,” the “Creative Curriculum and Language Literacy Programs.” “Preschool for All” is a high quality Early Childhood education program for children 3 and 4 years old and is geared to help children prepare for kindergarten. There is no cost for the program and it is offered in half day sessions (2.5 hours a day.) In Kankakee County, there is one Child Care Center and two Family Child Care homes that participate in the program.

FAMILY, FRIEND AND NEIGHBOR

Through grants from the **United Way of Kankakee County** and the **Community Foundation of Kankakee River Valley**, the Child Care Assistance Department was at CCR&R was able to implement a program known as the “Family, Friend and Neighbor Program” to assist the home-based provider population in providing quality childcare to low-income children in Kankakee County. This continuing program consists of informal visits to the provider’s home to give them information on quality childcare and services available to the provider through CCR&R. Also, during the visit, CCR&R staff offer information on developmentally appropriate practices by reading a book to the children, followed by a hands-on art activity. Basic information on health and safety is also provided that focuses on hand washing as the best prevention of most common childhood illnesses. Providers are left with creative art materials, children’s books, liquid soap for hand washing, personal first aid kit, smoke detector, fire alarm, growth charts, coloring books, crayons, and outlet covers.



QUALITY RATING SYSTEM (QRS)

The Quality Counts: Quality Rating System (QRS) assists Illinois child care programs in providing quality care for children and their families. This initiative is funded by the **Illinois Department of Human Services (IDHS)**. This voluntary system is available to license-exempt family child care providers, licensed family child care providers, and licensed centers. License-exempt centers need to become licensed to participate in QRS. Providers must serve children eligible for the IDHS Child Care Assistance Program (CCAP) in order to participate in QRS. The system offers progressive levels which providers can achieve depending on the type of care they provide. Specific quality criteria must be met to achieve a level. Once a child care provider has met the required criteria for a level, they will be recognized for their achievement and receive a quality add-on rate to the CCAP standard daily reimbursement rate. Technical assistance, training, and support are offered to all types of providers through Child Care Resource & Referral.

**Child Care Resource & Referral
Funders / Contributors / Supporters
July 2007 – June 2008**

Government

Federal Grant in Partnership with Joliet Township High Schools
Illinois Department of Human Services
Illinois School Board of Education

Foundations

Community Foundation of Kankakee River Valley
Grand Victoria Foundation
Illinois Children's Healthcare Foundation
Will County Community Foundation

United Ways

United Way of Grundy County
United Way of Kankakee County
United Way of Kendall County
United Way of Will County

Businesses

Best Toys, Inc. / Best of Best
Channahon's Three Rivers Festival Committee
Dee Plumbing
DeGues & Klafter
Fast Printing of Joliet, Inc.
Imperial Toy, LLC
J-M Printers Digital Express
Joliet Park District

Martin Whalen
Morris Wal*Mart Super Center
National City
Northern Illinois Steel Supply Co.
Personal Service Manufacturing Corp.
Prairie Trail Credit Union
Remco Medical, Inc.

Ladies Auxiliary – Knights of Columbus - Rev. Gordon Michels Council

Individuals

Barbara Biles
Karen Briski
Kenneth Crite
Sandra Davis
Bobbi Ellison
Regina Enos
Sarah Gumbel
Tony Gurick

Robert Hansen
Griselda Hernandez
Tony Jerisha
Sister Helen Jean Kormelink
Greg Kuhn
Gina Maggio
Dan Mihelich
Phil Mock

Kathy Peterson
Chree Porchia
Elizabeth Randall
Hollie Sakellaris
Jean Szpek
Wendy Troy

We make a living by what we get; we make a life by what we give.

Sir Winston Churchill (1874 - 1965)



**Child Care Resource & Referral
Board of Directors
FY '08**

President

Robert Hansen
*Manager, Small Business
Development Center
Joliet Junior College
Will County*

Vice-President / Treasurer

Dan Mihelich
*Vice President
First Midwest Bank
Will County*

Secretary

Sandra Davis
*Unit Leader
University of Illinois Extension
Kendall County*

Barbara Biles

*Early Childhood Instructor
Joliet Junior College
Will County*

Kenneth Crite

*Small Business
Development Center
Kankakee Community College
Kankakee County*

Tony Jerisha

*Captain
Joliet Police Department
Will County*

Sister Helen Jean Kormelink

*Superintendent
Diocese of Joliet
Will County*

Greg Kuhn

*Plant Manager
DOW
Will County*

Kathy Peterson

*Administrative Assistant / Community
Liaison
Quality Home Health, Inc*

The members of the board of directors and staff have a passionate commitment to meeting the needs of families and children, especially those in poverty, assisting child care providers to do their best, solving problems, raising the quality and professional caliber of the child care field, raising the importance and priority of early childhood education in society, and promoting the urgency of improvements of young children.

Administrative Staff

Chris Bzdon

Executive Director

Tamara Notter

*Assistant Director
Manager, Training*

Amy Emerson

*Assistant Director
Manager, Financial Assistance*

Lydia Okrant

Manager, Parent Referral

Robert Reyes

Manager, Technology

Tamika Chism

Manager, Business Operations



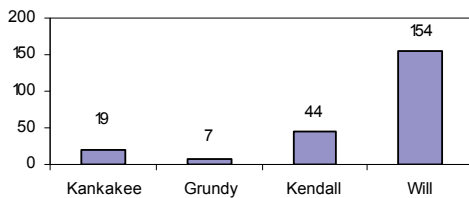
PROVIDER SERVICES

Trainings:

CCR&R works to improve the quality and supply of child care through orientations, ongoing training, and the disbursement of grant funding to child care providers in Will, Grundy, Kendall, and Kankakee counties.

In FY08, **115** people attended Starting Point workshops to learn the many different aspects of starting a family child care business in their home. From these 115 people, 69 were added to our database as providers doing care. 67 of these are licensed; 2 self-certified that they are legally licensed-exempt, meaning they can care for 3 or less children at any one time. An additional 155 providers were added to the database from other sources.

The chart at right shows where the new providers reside, by county.



CCR&R also administers a support program for providers through the Recruitment Department, called "Mentor Connection." The Mentor Connection provider support program enables new providers the opportunity to be guided by CCR&R trained experienced providers. There are 6 mentors- 4 family child care providers and 2 group family child care providers. The Child Care Network is a new program established to support the Pre-School for All initiative, a grant from the Illinois State Board of Education. 17 providers- 3 centers and 14 family child care providers participate, helping 100 three and four year olds prepare for Kindergarten. Through the "Mentor Connection" and the "Pre-School for All" program, CCR&R impacts the quality of child care in our region.

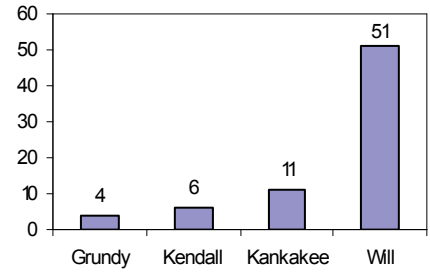
This past year, CCR&R sponsored **137** workshops totaling 465 hours of training for providers. Topics ranged from "Emergency Preparedness" to "Creative Curriculum." **1,501** caregivers and teachers attended these trainings.

For the past seven years, CCR&R has administered Quality Enhancement monies from IDHS to improve and expand early care and education services in Illinois.

Goals of this program include:

- Increase the availability/quality of care for infant/toddlers, school-age children, and children with special needs.
- Increase the availability/quality of care of providers who care for children receiving child care assistance.
- Retain centers and homes that meet and exceed DCFS licensing standards.
- Encourage exempt programs to become licensed.

This year, 96 grant applications were received. **72** grants were awarded totaling **\$241,299**. 48 of the grants went to licensed family child care providers and 24 went to licensed child care centers. \$65,000 of this money went to programs that would improve or expand the quality and/or capacity of infant/toddler care.



Grants were distributed across counties as shown at right.

Nurse Consultant:

In cooperation with the Will County Health Department, CCR&R houses a Nurse Consultant who is a resource to parents and providers. The Nurse Consultant also provides many child-health related trainings to providers to help them in the care they give children. In FY08, the Nurse Consultant conducted 22 trainings for child care providers. 53 hours of training were provided to approximately 273 providers.

SELF (The Social-Emotional Learning Facilitation Program) and Care Giver Connection:

The SELF & Care Giver Connection programs are currently available to help child care providers with specific behaviorally challenged children ages 0-5 years old. The programs help providers and families develop an overall plan to improve the child's social-emotional learning environment.

SELF services offered at no cost include:

- Consultation with family and center child care providers on:
 - a. encouraging social and emotional well-being for children 0-5 years
 - b. challenging behaviors of specific children; development of an action plan to reduce problem behaviors (parental permission required)
- Referrals for the child/family if needed
- Training for child care providers on the development and maintenance of children' social-emotional well-being and managing and preventing challenging behaviors that interfere with a child's capacity to function in a school setting.

**This report prepared from FY08 database numbers from CCR&R.



801 N. Larkin Avenue, Suite 202
Joliet, Illinois 60435

(815) 741-1163 www.childcarehelp.com



801 N. Larkin Avenue, Suite 202
Joliet, Illinois 60435

www.childcarehelp.com

